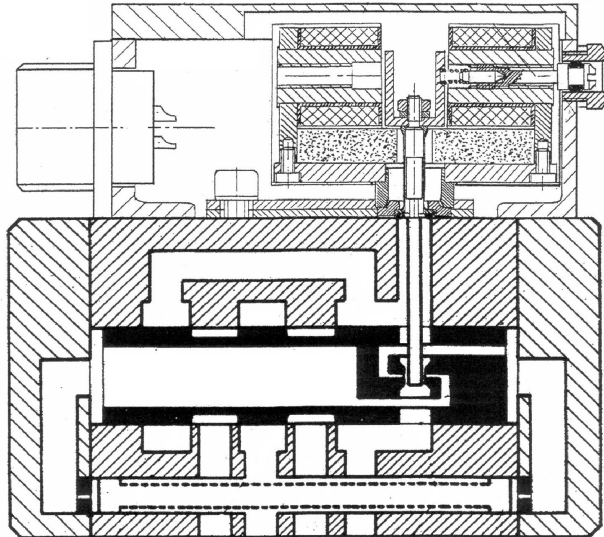


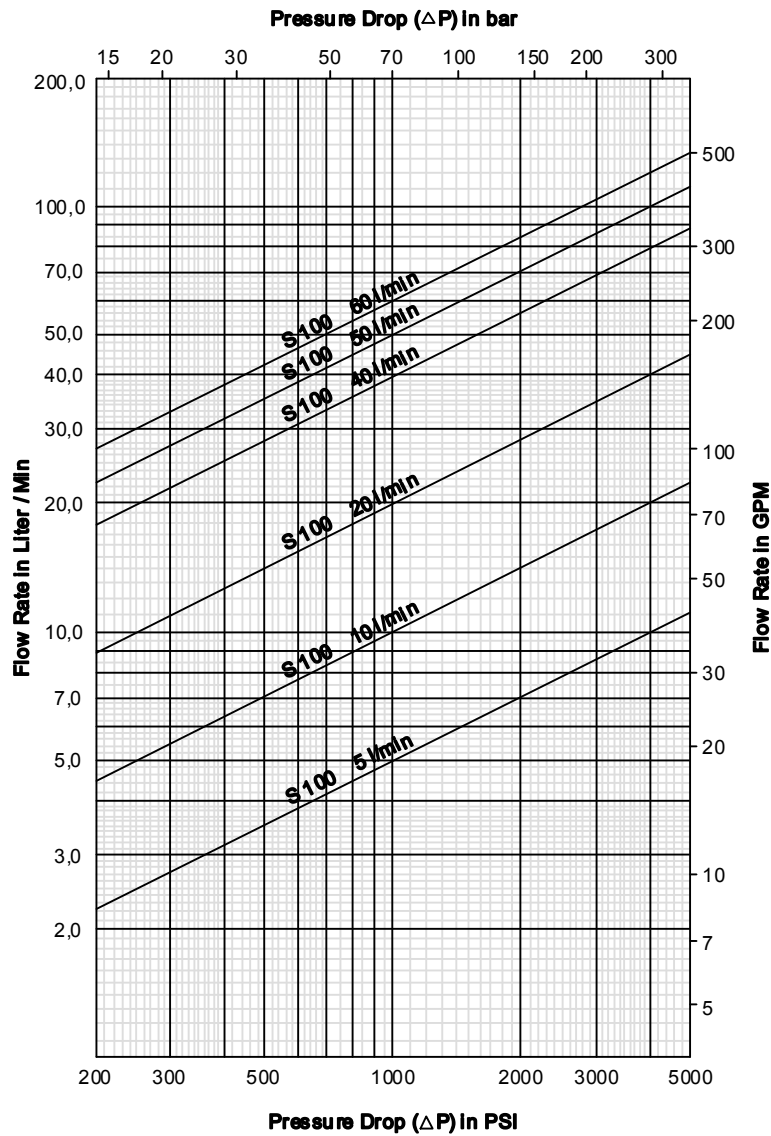
**Valve features**

- Servovalve for position-, force-, pressure- or speed regulation
- Two stage servovalve with mechanical feedback
- First stage nozzle / flapper
- 2-stage design with dry isolated torque motor
- Fully iron
- Rugged, long-life design
- ISO 4401 port pattern for 4-ports
- High resolution
- High pressure application
- Easy field maintenance
- 2 minutes filter exchange
- Customer requested setup at the factory

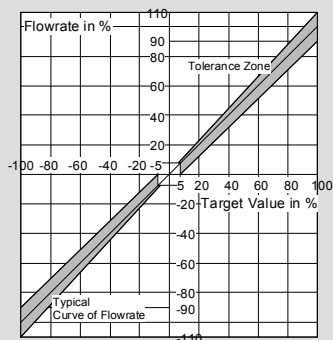

**Technical data S100**

<b>Nominal size</b>	<b>005</b>	<b>010</b>	<b>020</b>	<b>040</b>	<b>060</b>
Rated Flow $\pm$ 10 % at 1000 psi $\Delta$ P Drop – gpm at 70 bar $\Delta$ P drop – L/min	1,0 5,0	2,5 10,0	5.0 20.0	10.0 40.0	15.0 60,0
Frequency response at 90° Phase Shift, 210bar, at 40% amplitude – Hz	100	100	100	100	100
Step response in milli seconds	4	5	6	7	7
Leakage at 1000 psi, 50 cSt, gpm 70 bar, 50 cSt, L/min.	0.21 0.8	0.26 1.0	0.40 1.5	0.40 1,5	0.40 1,5
<b>All flow rates</b>					
Port pattern	Cetop 05 / NG 10				
Flow rate	5 – 60 Liter				
Maximum pressure, port P, A, B psi / bar	4500 / 315 (5000 psi / 350 bar on request)				
Maximum pressure, port T psi / bar	290 / 20				
Temperature range F° / C°	4 to 194 / -20 to +90				
Fluid viscosity	20 to 380 cSt				
Resolution	0,2%				
Hysteresis	<4%				
Null point shift for pressure change of 20%	1%				
Null point shift for viscosity change of 30 cSt	1.5%				
Electrical feedback	No / electronics available				
Electrical connector	4 pin / MS3106R14S-2S				
Weight	2.4 kg				
System filtration	High pressure filter in the main flow and, if possible, directly upstream of the valve. Filter rating: 10 $\mu$ m absolute				

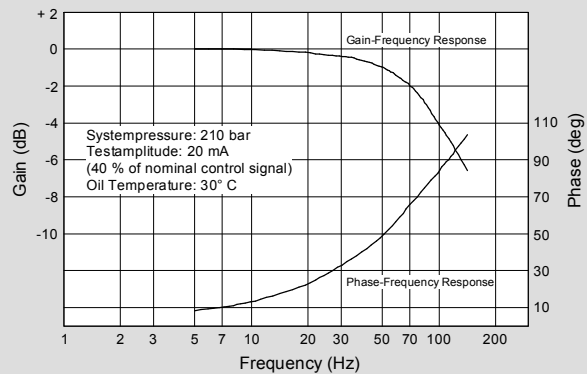
Valve Flow Diagramm



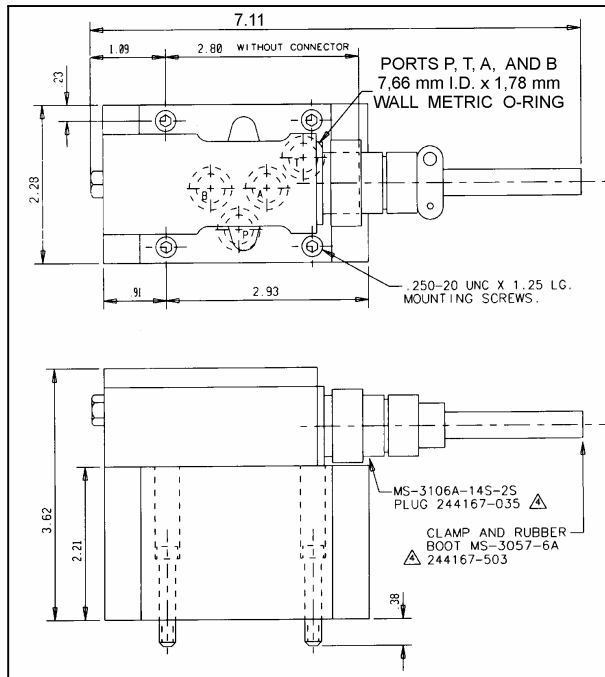
Volume-Signal at constant pressure difference



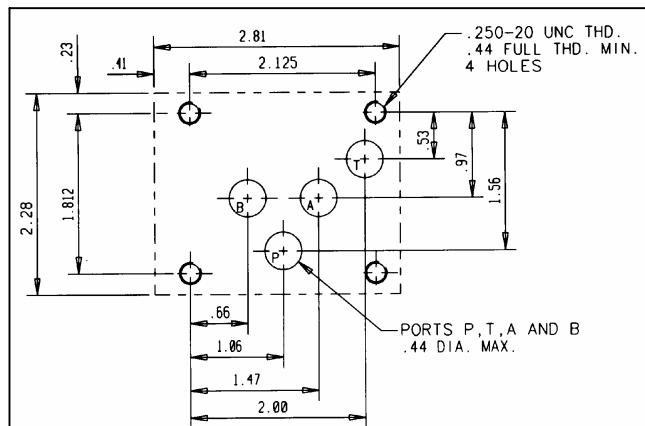
Frequency Response



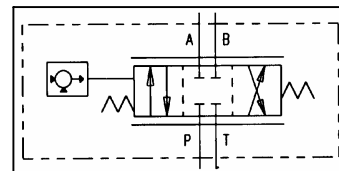
## Dimensions



## Connection



## Hydraulic Schema



## Electrical Data

Coil	Typ	40	80	100	130	200
Parallel connection	max. J [mA]	52	104	130	170	350
	max. U [V]	32	16	10	8	5
Serial connection	max. J [mA]	27	53	66	86	175
	max. U [V]	63	31	21	15	9
Resistance per coil at	70° [Ω]	1200	300	160	90	24

**Coil 130mA standard.** Coil 40 mA, 80 mA, 100 mA, 200 mA on request.

## Application examples

Pump & kompressor control, plastic molding, wood industry, mobile crane, power generation, packaging system, machine automation, agriculture machinery, industrial automation, m.m.

Wie bestelle ich ein Mengen-Servoventil:

Typen Nummer

1	2	3	4	5	6	7	8	9
---	---	---	---	---	---	---	---	---

1 Größe/Typ	
S1-4	
S25	
S100	
S120	
S120E	
S300	
S300E	
DS 6	
DS 11	

9 Spritzwasser	
S	Spritzwasserfest
N	Nicht spritzwasserfest (Standard)

8 Anwendungsspezifische Ausführung	
C	Anwendungsspezifische Ausführung
N	Normale Ausführung (Standard)

7 Verstärker-Elektronik	
E	Externe Verstärker Elektronik
I	Integrierte Verstärker Elektronik (S120E & S300E)
N	Keine

6 Spulen für Magnetsysteme	
040	40 ma
080	80 ma
100	100 ma
130	130 ma (Standard)
200	200 ma

5 Dichtungsmaterial	
V	Viton / fluorocarbon (Standard)
E	EDPM

2 Nenndurchfluß	
Andere Durchflüsse als Standard auf Anfrage	
Cetop 03 / NG 6	
001	0.26 G/Min (1.0 L/Min) S1-4 / S25
002	0.66 G/Min (2.5 L/Min) S25
005	1.3 G/Min (5 L/Min) S25
010	2.6 G/Min (10 L/Min) S25
025	6.6 G/Min (25 L/Min) S25
Cetop 05 / NG10	
010	2.62 G/Min (10L/Min) S100
020	5.24 G/Min (20L/Min) S100
040	10.5 G/Min (40L/Min) S100 / S120
050	13.2 G/Min (50L/Min) S100 / S120
060	15.7 G/Min (60L/Min) S100 / S120
080	20.9 G/Min (80L/Min) S120
100	26.2 G/Min (100L/Min) S120
120	31.7 G/Min (120L/Min) S120
Cetop 07 / NG20	
100	26.5 G/Min (100L/Min) S300
200	52.9 G/Min (200L/Min) S300
300	79.4 G/Min (300L/Min) S300

4 Eingangsdruck	
040	580 PSI (40 Bar)
070	1000 PSI (70 Bar)
140	2000 PSI (140 Bar)
210	3000 PSI (210 Bar)
315	5000 PSI (315 Bar)
350	5555 PSI (350 Bar) Nur DS-Ventile
420	6666 PSI (420 Bar) Nur DS-Ventile

3 Pilot Drain Arrangement	
N	Internal drain/internal pilot (Standard) (for Size 03, 05 & 07)
Y	Internal pilot/external drain (Size 07 only)
X	External pilot/external drain (Size 07 only)